

# **Local Nature Recovery Strategies**

**Karen Colebourn CBiol FCIEEM**

**Ecological Planning and Research Ltd**

**Des Hobson CEnv MCIEEM**

**Ecological Planning and Research Ltd**

**Consultant Ecologist, Swindon Borough Council**





**Before....**









# Framework for discussion...

- EPR reviewed net gain strategies in 2018.
- We are in very early stages of preparing a LNRS for Swindon.
- Now in Swindon's Draft Local Plan 2036.
- First identify opportunities spatially.
- Then specify measures to be secured through planning or funded through developer contributions.

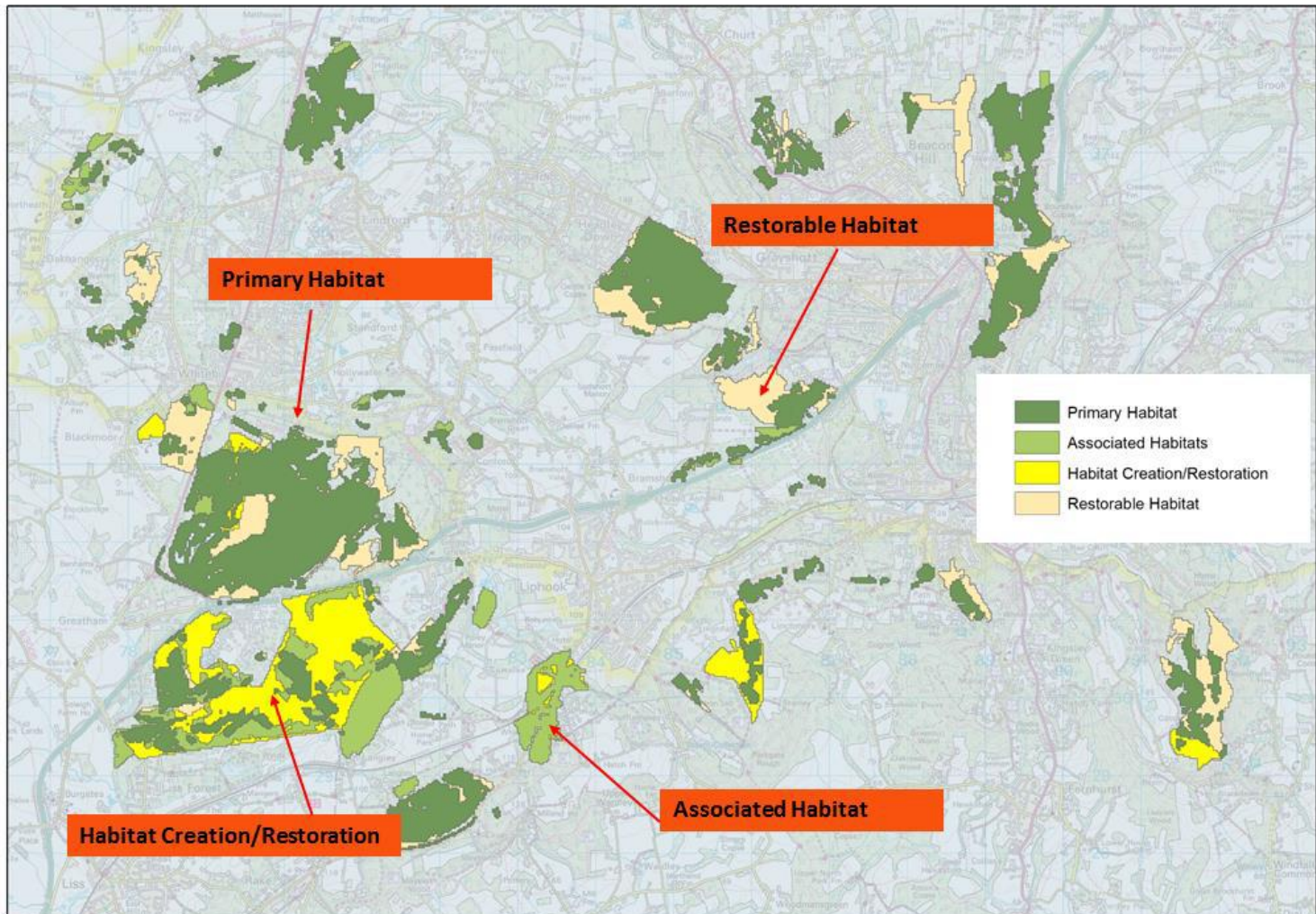
# What should a Local Nature Recovery Strategy contain?

- A statement of biodiversity priorities for the local area
- Local habitat map that identifies opportunities for recovering or enhancing biodiversity
- Consideration of other ecosystem services
- Package of deliverable measures

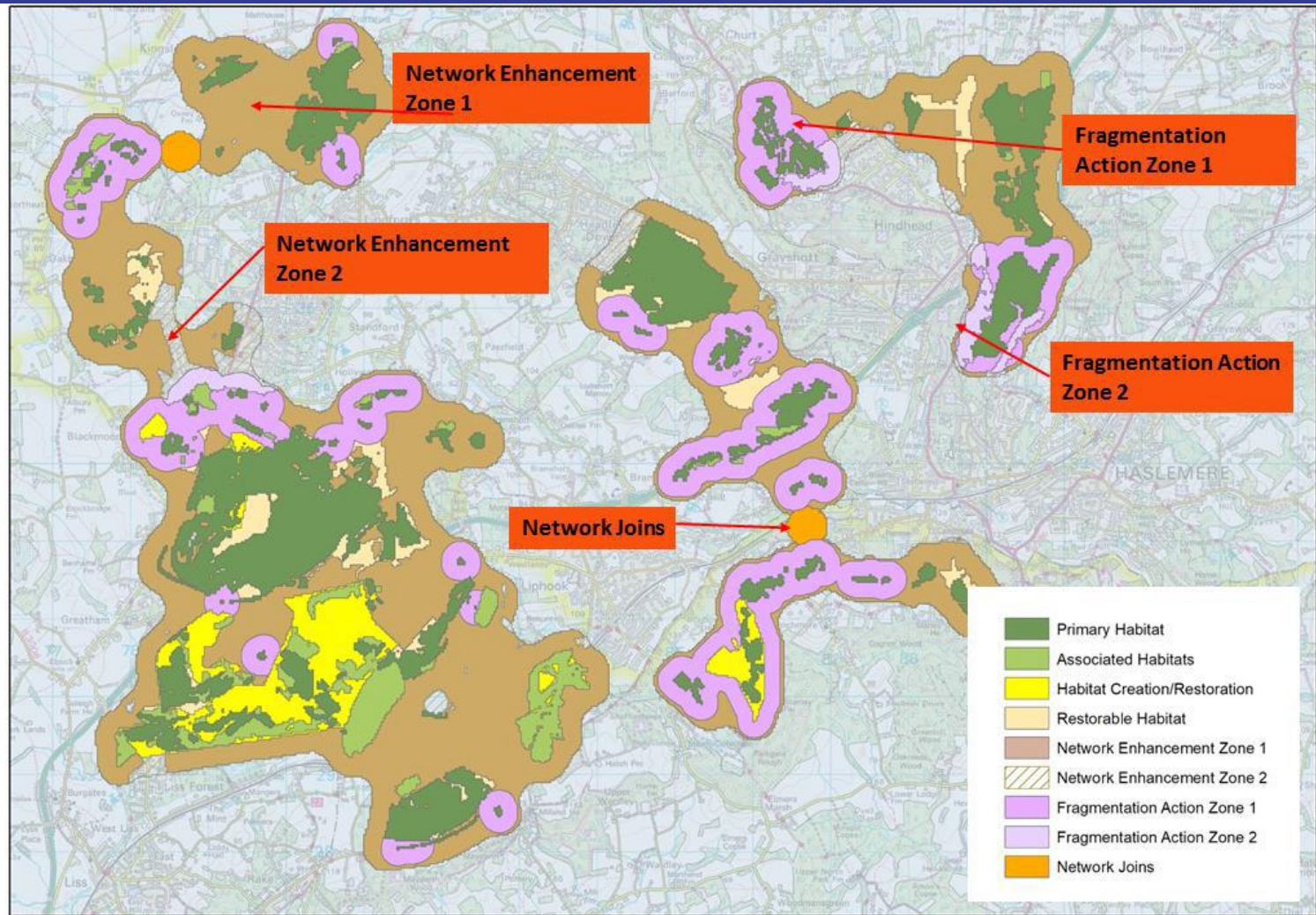
# How will we prepare it?

- Map protected sites
- Historic map data
- Map hotspots for selected protected species - from BRC and EPS licence returns
- Identify potential linear habitats: rivers to hedge-lines. Satellite photos.
- Link to Green Infrastructure Strategy, and other ecosystem services.

# Natural England's Natural Habitat Networks Mapping Project









# How can we achieve it?

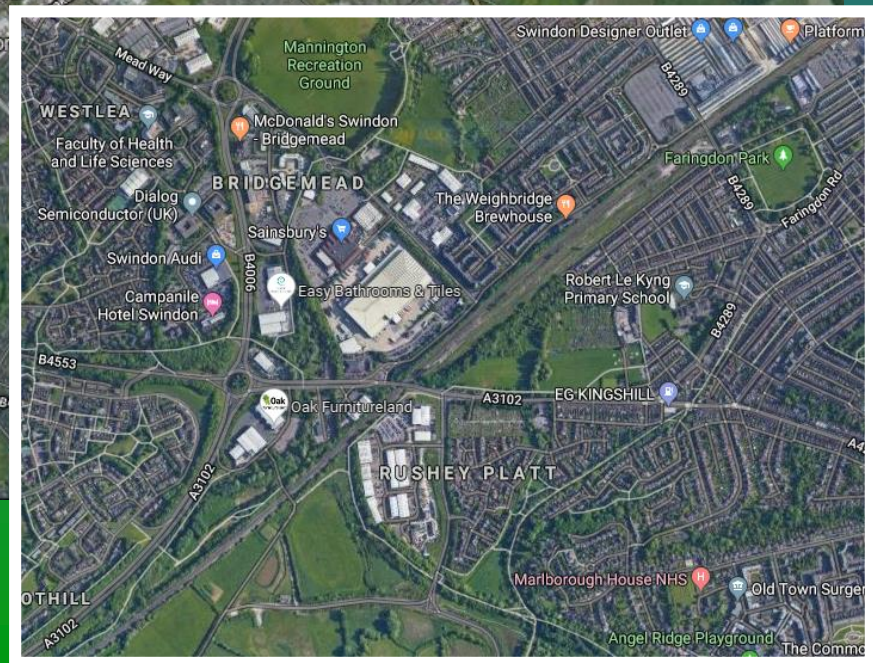
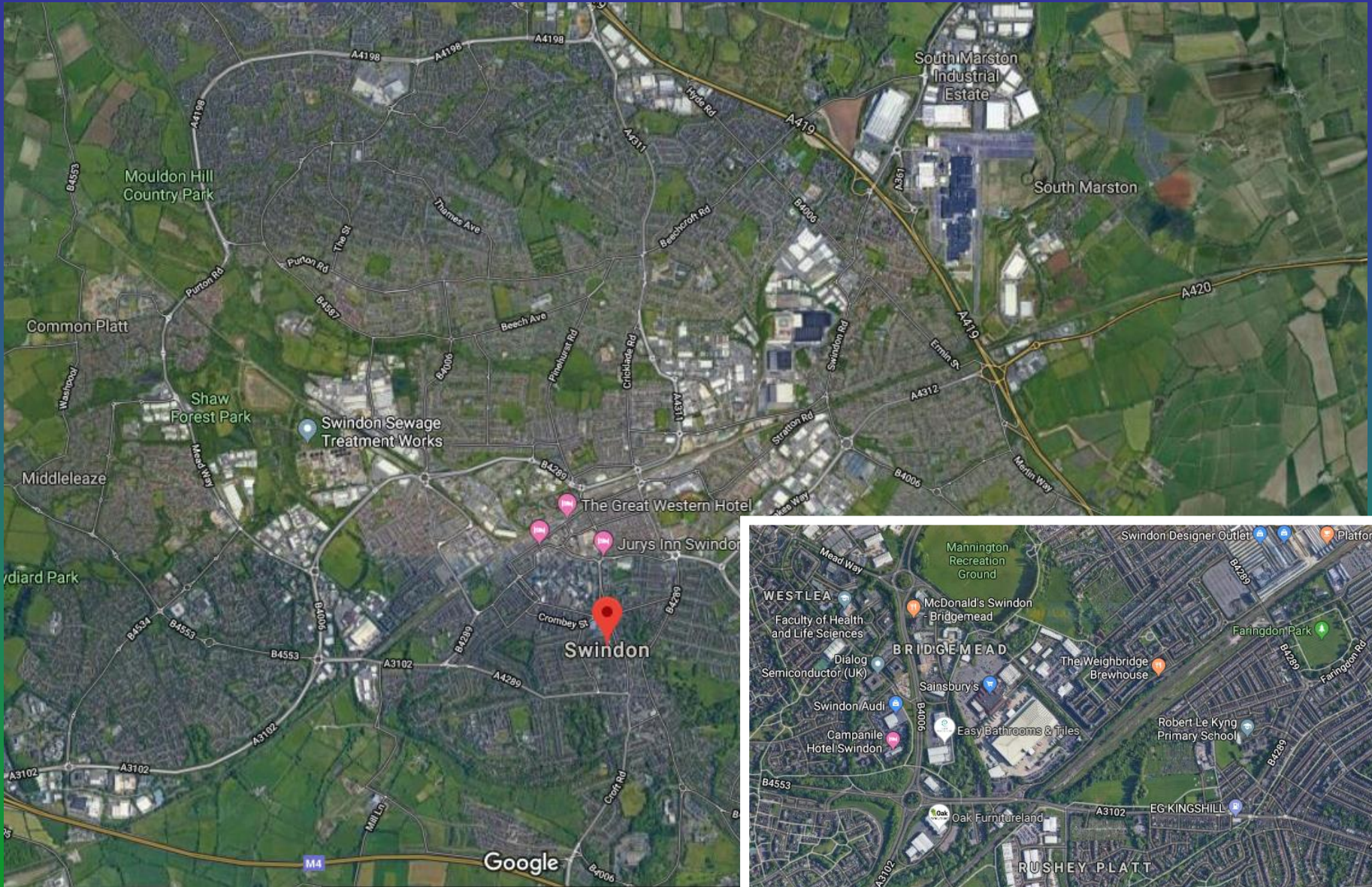
- Specify 'on-site' net gain measures in appropriate allocation policy documents
- Produce a package of net gain measures to be funded by developers who cannot deliver net gain on site
- Include monitoring (of implementation and effectiveness) and plan review in costings



# Package of off-site measures

- Scale of package will depend on developer contributions and therefore % net gain required
- Number of projects will depend on period of maintenance to be funded
- Liaise with owners and managers to identify appropriate projects. Start with 'friendly' owners who will agree to long term measures.







# Discussion

- What is an appropriate % of net gain to aim for?
- What land can be included in off-site measures? Can nature reserves owned by conservation bodies provide truly 'additional' measures?
- Can we add to agri-environment schemes to encourage specified net gain?
- How to secure a binding commitment, and over what time period?



# Thank you



EPR

ECOLOGICAL EXPERTISE, EVOLVED