



Learning Lessons from Existing Strategic Access Mitigation Projects



ALGE Conference

3 December 2019

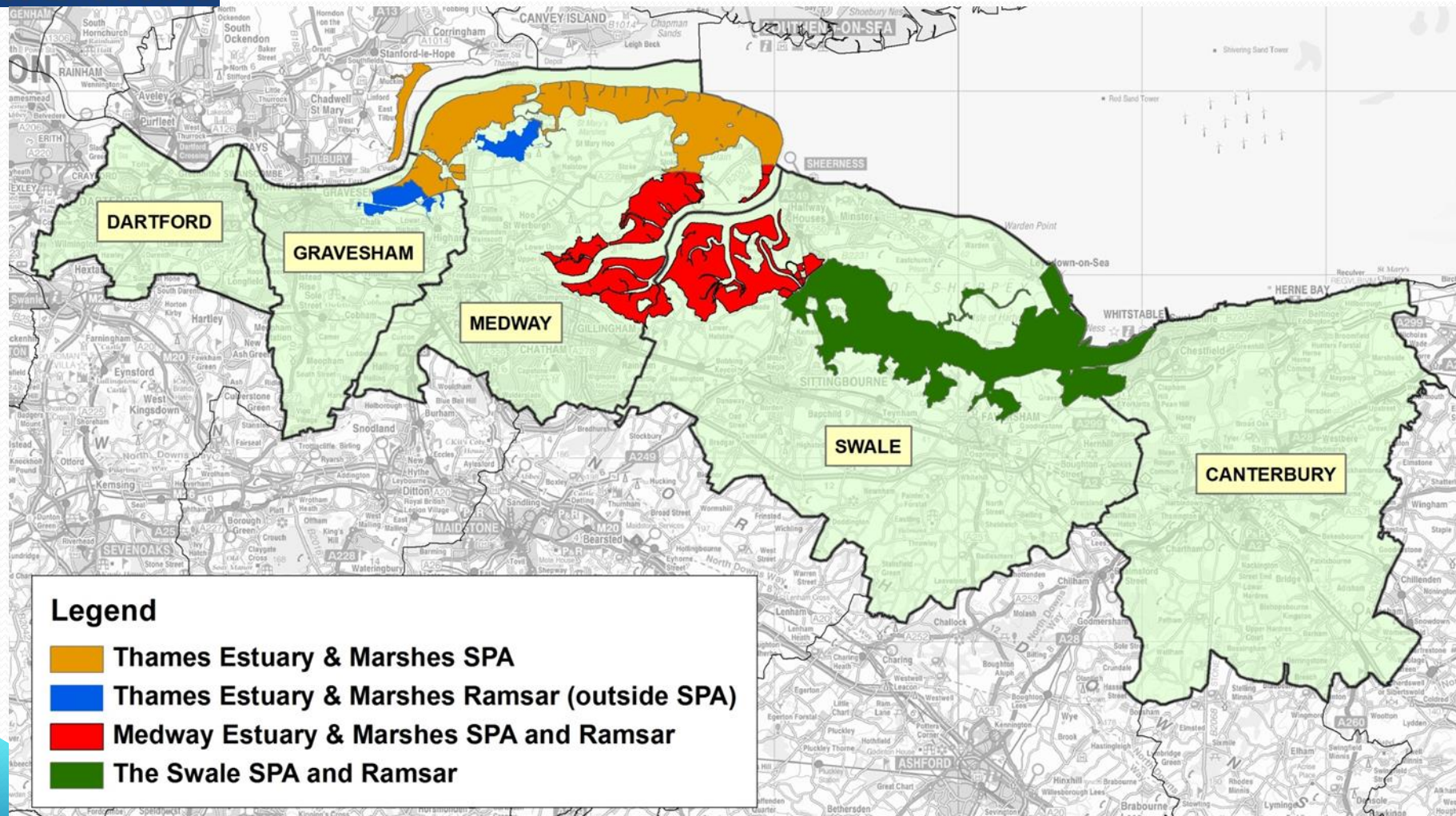
Hayley Taylor



The Bird Wise Partnership



Wising up to bird disturbance



Wising up to bird disturbance

Protected Species



- 39 bird species listed on the SPA / Ramsar classifications
- 10 Red status
- 23 Amber status
- Internationally significant.



Recreational Activity



- Variety of recreational activities
- Huge benefits to mental and physical health from spending time outdoors and connecting with nature
- Estimated 15% increase in recreational visits arising from new housing.

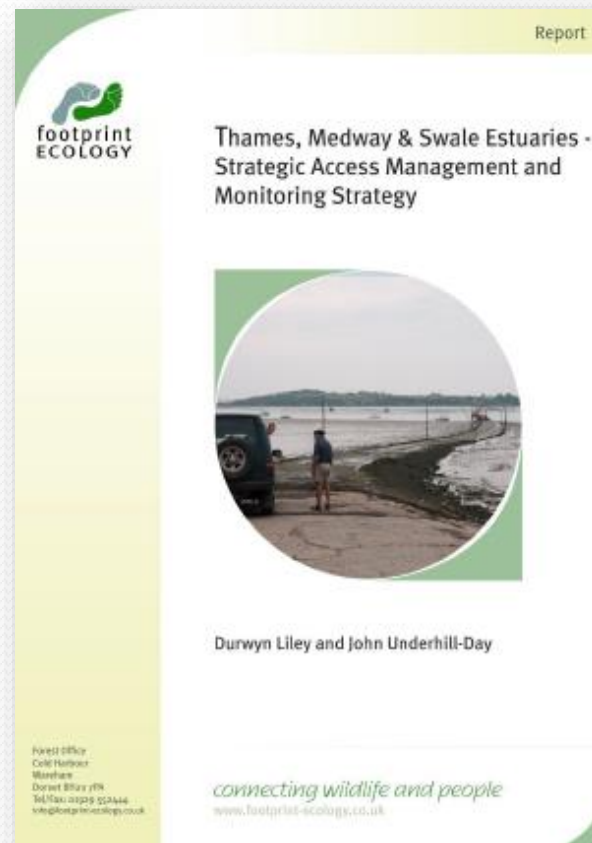


A Strategic Approach

- Evidence base/ reports include:
 - Bird Disturbance Study, North Kent 2010/11 (Footprint Ecology)
 - What do we know about the birds and habitats of the North Kent Marshes? (Natural England Commissioned Report 2011)
 - North Kent Visitor Survey Results (Footprint Ecology 2011)
 - Estuary Users Survey (Medway Swale Estuary Partnerships, 2011)
 - North Kent Comparative Recreation Study (Footprint Ecology 2012)
 - Wetland Bird Surveys (WeBS) produced by the British Trust for Ornithology
 - Thames, Medway and Swale Estuaries – Strategic Access Management and Monitoring Strategy (Footprint Ecology 2014)

A Strategic Approach

- Provides certainty for development in terms of meeting Habitats Regulations requirements.
- Strategic approach enables more efficient, co-ordinated delivery and avoids 'displacement' effects between local authority areas.
- Enables strategic mitigation delivery with economies of scale.



Mitigation



- Seasonal Rangers
- Codes of Conduct
- Signage
- Site Enhancements
- Dog focused projects
- Enforcement
- Monitoring



Communication

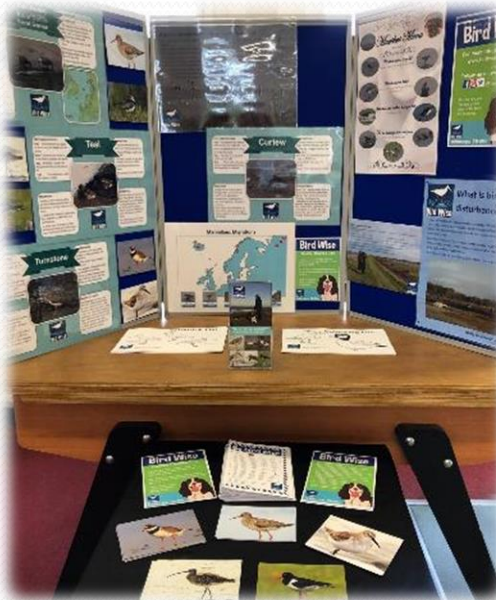
- Dedicated website www.birdwise.org.uk
- Follow us on social media @birdwisenk



- Email birdwise@medway.gov.uk



Progress to Date



Wising up to bird disturbance



Thank You



Wising up to bird disturbance