



Providing Data to Support the
Net Gain Approach

Dan Carpenter

3rd December 2019

Data to support net gain



GiGL

Greenspace Information for Greater London CIC
the capital's environmental records centre



Outline

1. Brief look at the NPPF
2. Setting standards
3. Baseline data
4. Offset registers
5. Monitoring
6. Reporting
7. Other services
8. Ecological networks & NRNs
9. ALERC
10. Summary

- Paragraph 170. Planning policies and decisions should contribute to and enhance the natural and local environment by:
 - d) minimising impacts on and providing net gains for biodiversity, including by establishing coherent ecological networks that are more resilient to current and future pressures;
- Paragraph 174. To protect and enhance biodiversity and geodiversity, plans should:
 - b) promote the conservation, restoration and enhancement of priority habitats, ecological networks and the protection and recovery of priority species; and identify and pursue opportunities for securing measurable net gains for biodiversity.
- Paragraph 175. When determining planning applications, local planning authorities should apply the following principles:
 - d) development whose primary objective is to conserve or enhance biodiversity should be supported; while opportunities to incorporate biodiversity improvements in and around developments should be encouraged, especially where this can secure measurable net gains for biodiversity.

Data standards



G055 TfL Contractor Data Guide

Guide for providing data to GiGL. Recommended survey standards for TfL contractors.

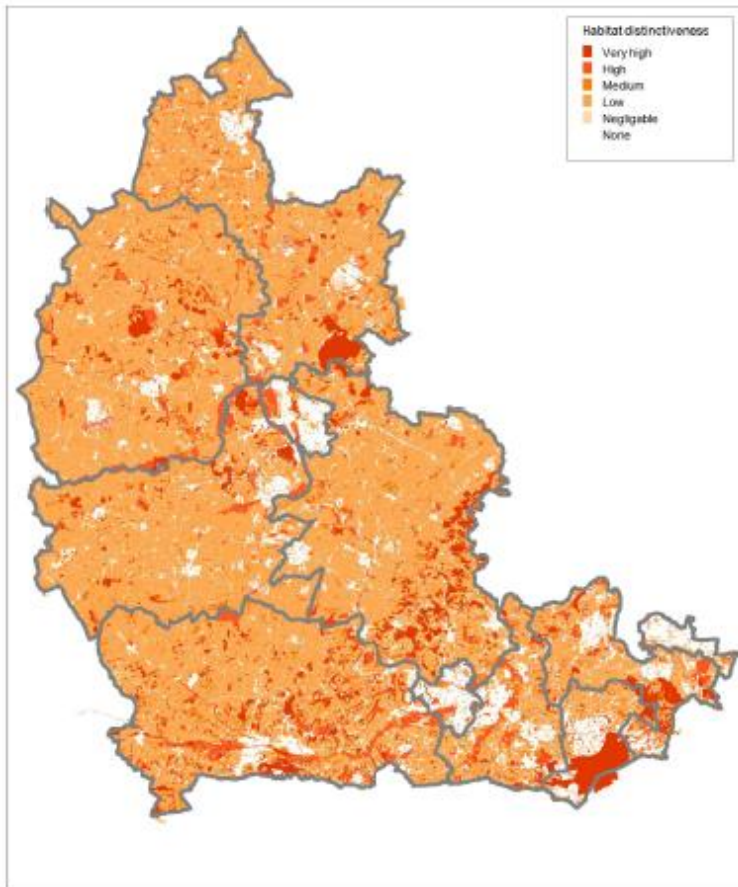
Standards mean net gain assessments are:

- ☐ Transparent
- ☐ Reproducible
- ☐ Repeatable

Discussion on habitat condition standards: <https://tinyurl.com/sb96dg3>

Baseline data

Habitat distinctiveness map for Berkshire and Oxfordshire



- Highest value for priority habitat within designated sites
- Landscape view of habitats and areas of importance

21% of Hampshire is recorded as Priority Habitat of which 72% lies within SSSIs and SINC

Offset site register

Register:

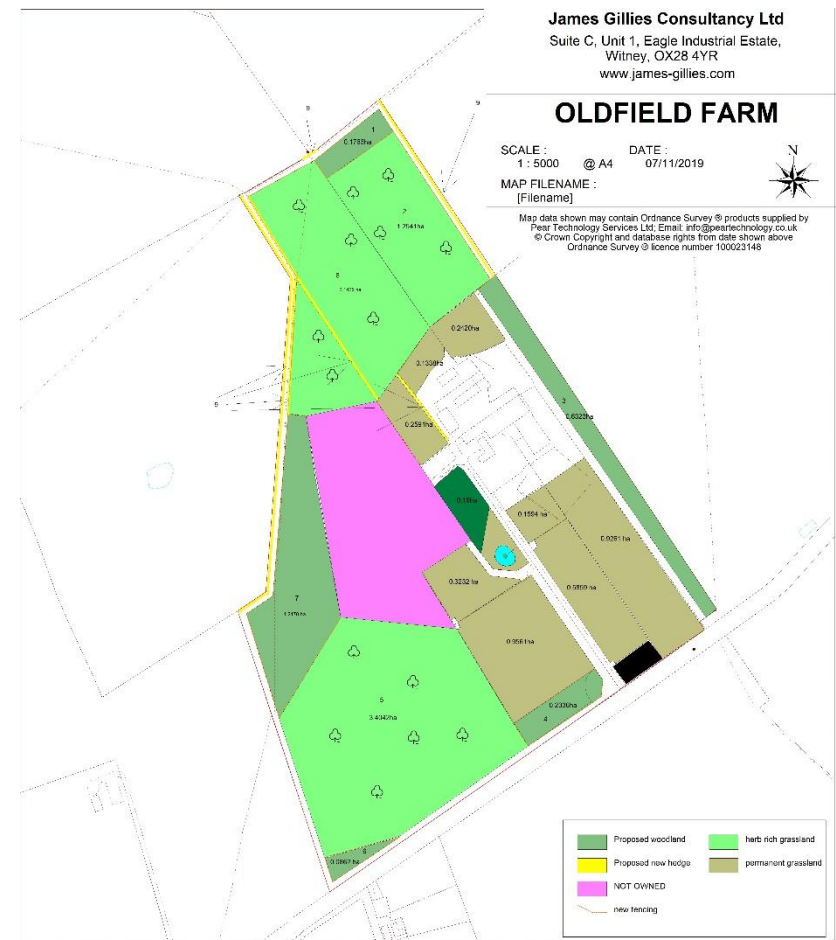
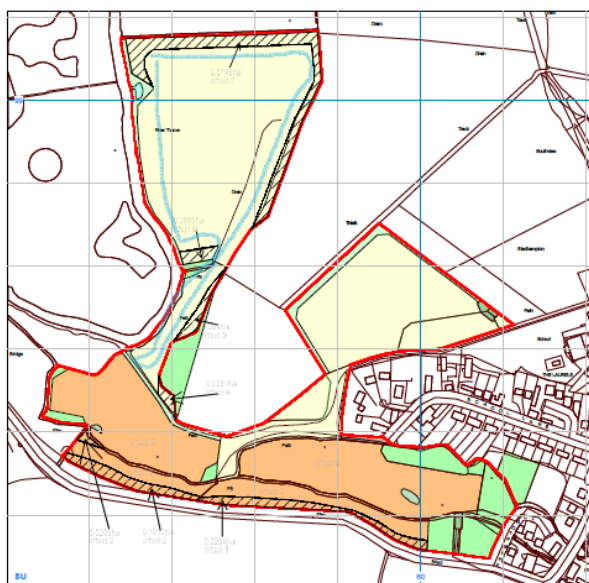
- Site location
- Proposed habitat
- Baseline habitat and condition
- Monitoring data

James Gillies Consultancy
Suite C, Unit 1, Eagle Industrial Estate, Witney, Oxon, OX28 4YR
www.james-gillies.com

The Old School, Stadthampton

SCALE: 1:5000 @ A4 DATE: 07/11/2019
MAP FILENAME: [Filename]

Map data shown may contain Ordnance Survey products supplied by
Pear Technology Services Ltd. Email: info@pear-technology.co.uk
© Crown Copyright and database rights from data shown above
Ordnance Survey © licence number 100023148



Monitoring



Site monitoring:

- Habitat type and condition
- Repeated observations to inform management

Traditional botanical/habitat survey
Exploring new technology for rapid
assessment



Reporting

Biodiversity Annual Monitoring Reports

TVERC collate and analyse environmental data and produce an annual biodiversity monitoring report to Local Authorities in Berkshire and Oxfordshire. The report covers a number of environmental indicators that help to monitor biodiversity within their district.

Currently there are seven possible indicators that are analysed as part of the report.

- Changes to area of Local Wildlife Sites
- Priority habitat
- Priority Species
- Status and distribution of water vole
- Status and distribution of farmland birds
- SSSI condition



Reporting



GiGL

Greenspace Information for Greater London CIC
the capital's environmental records centre

GiGL's Camden Data



www.gigl.org.uk

@iGiGL

Top 5 Contributors of Wildlife Records:



Sites of Importance for Nature Conservation (SINCs)

- Number of SINCs: 36
- SINC area: 414ha
- Percentage SINC: 19.0% of borough

Open Space

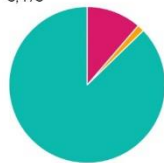
- Number of open spaces: 332
- Open space area: 518ha
- Percentage open space: 23.8% of borough
- Priority habitats: 8/9

Wildlife Records

- Species records: 67,372
- Designated or notable records: 13.7%
- Invasive non-native species: 2.5%

Number of Species

- Total species number: 3,473



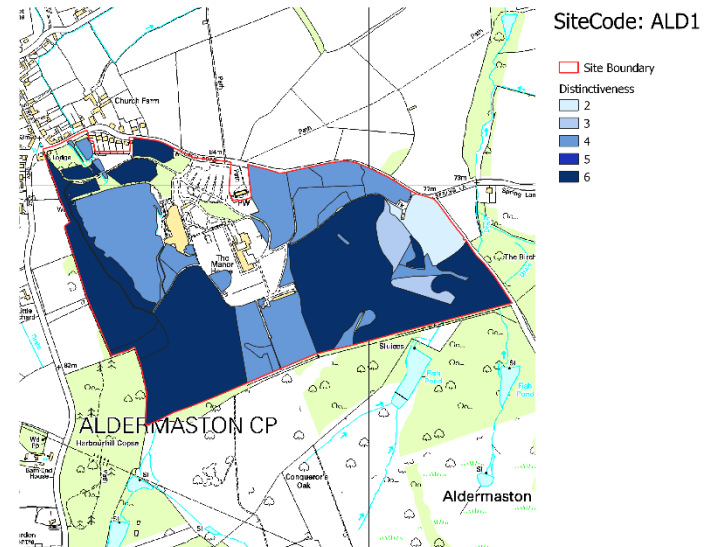
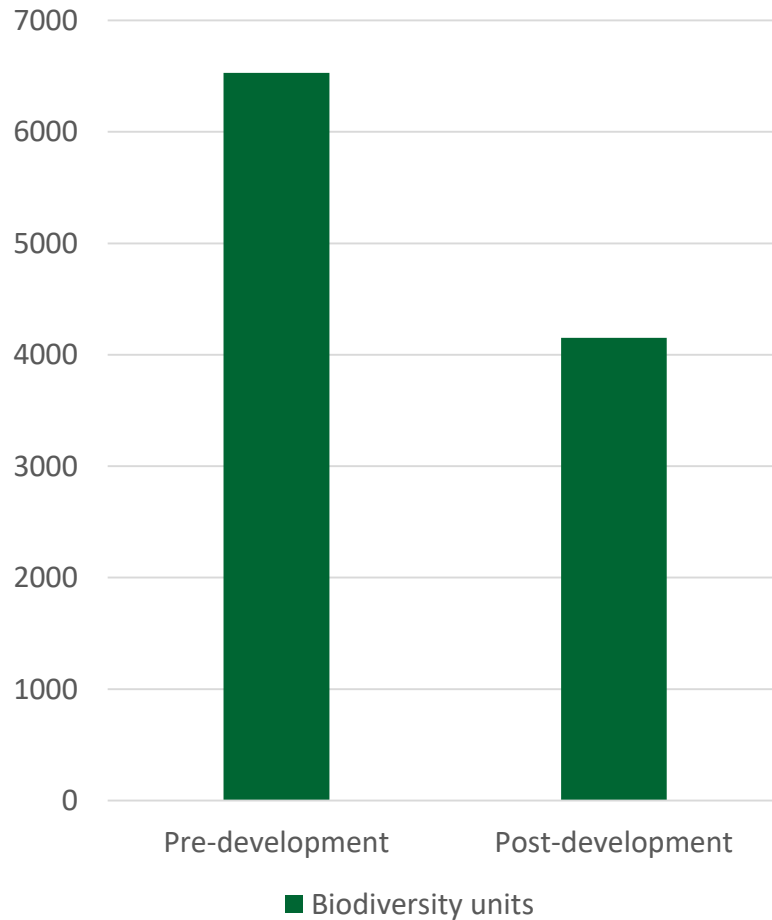
GiGL

Greenspace Information for Greater London CIC
the capital's environmental records centre

January 2019

- LERCs already reporting on biodiversity indicators
- E.g. Annual Monitoring Reports, SDL160 indicator
- Reporting on net gain is a natural extension

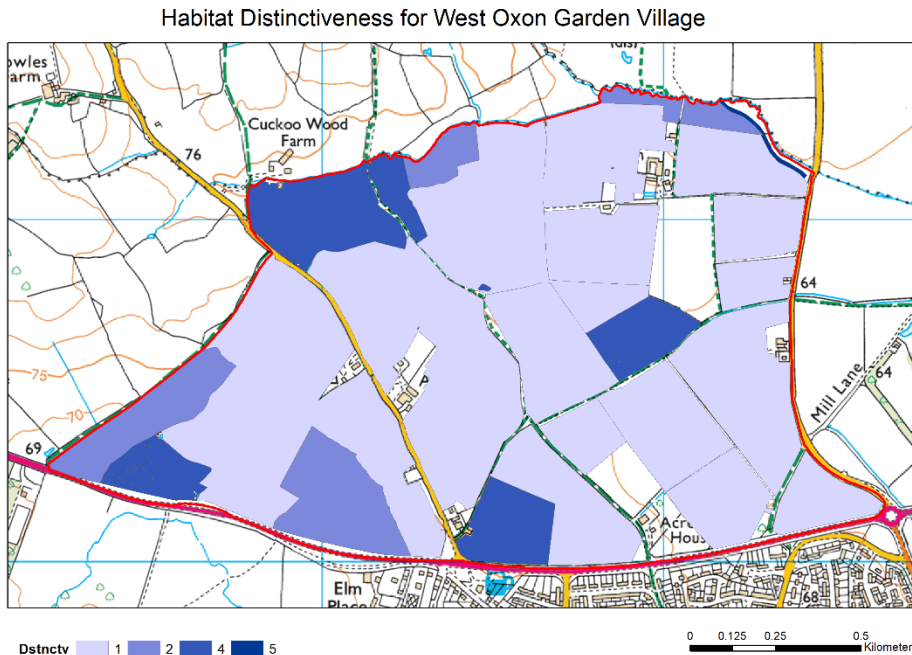
Net gain assessments



West Berkshire Local Plan Sites

- Forecast loss of between 2,379 and 13,577 units
- Net biodiversity loss value between £21 million and £200 million

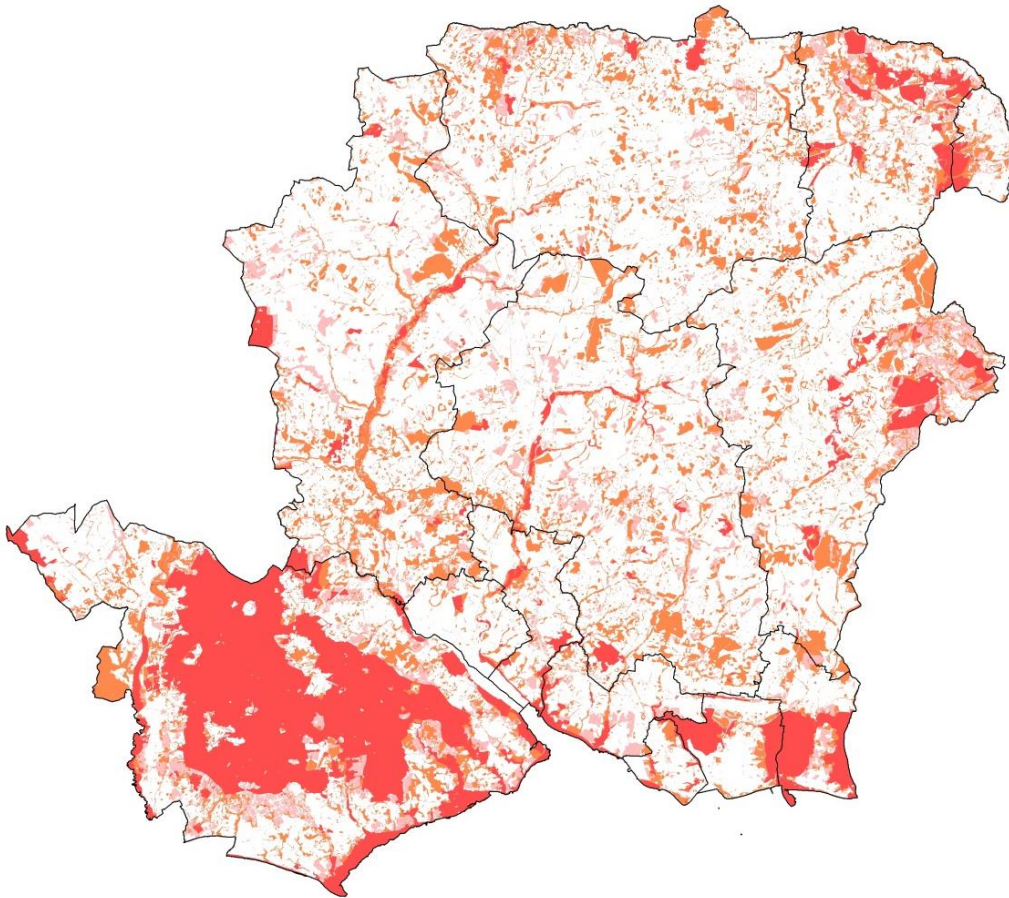
Support for LPAs



West Oxfordshire District Council

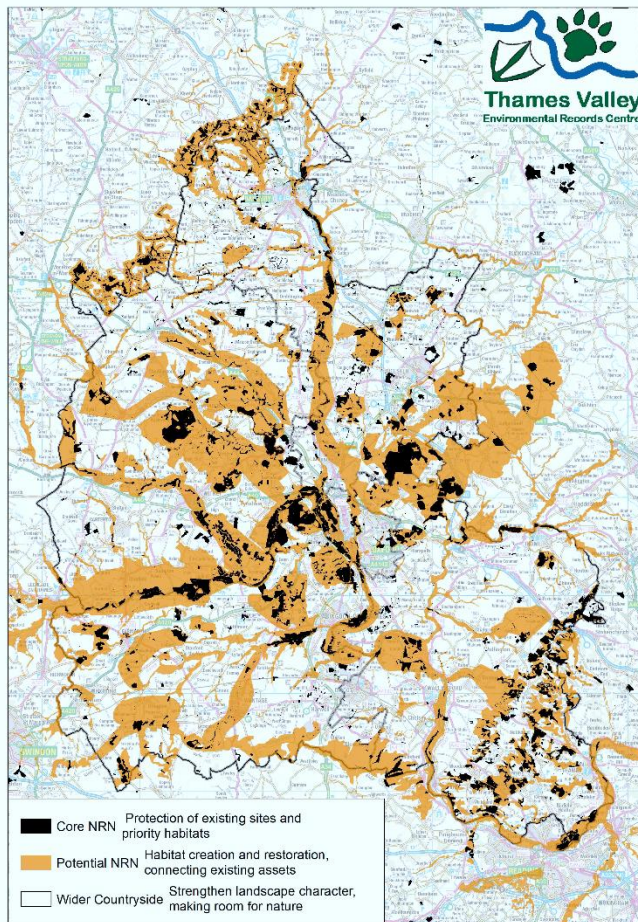
- Training on metric and net gain assessment
- Carrying out assessments at application stage

Ecological networks



- Hampshire
Ecological Network:**
- **Core Statutory Sites,**
 - **Core Non-statutory Sites,**
 - **Network Opportunities**

Nature Recovery Network



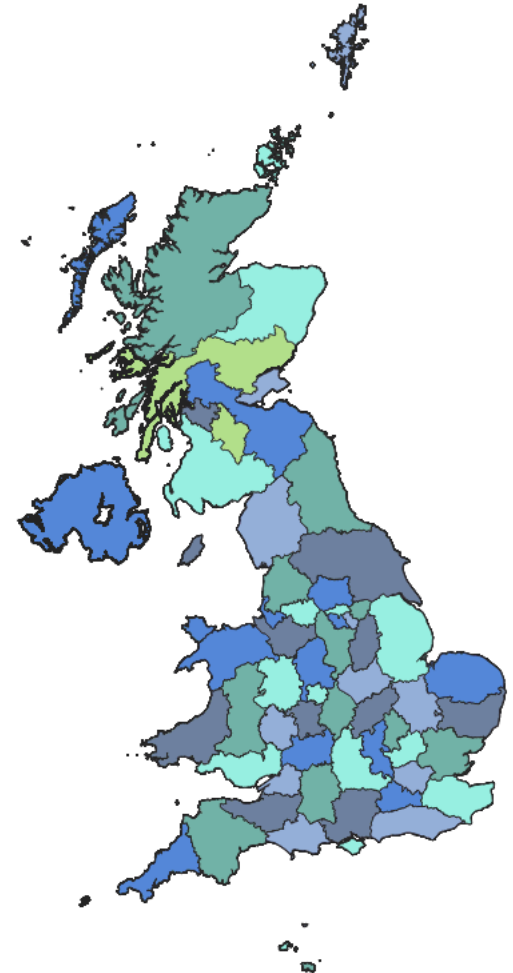
Draft NRN for
Oxfordshire:

- Core Areas
- Potential Areas
- Wider Landscape

Work to commence
shortly in Berkshire

Tools and standards

- ALERC provides an accreditation scheme for LERCs
- Develop accreditation to incorporate standards
- Deliver a local service to meet LPA needs



Summary

- ❑ LERCs are impartial – so is their data
- ❑ ALERC is leading work to set and raise standards, both for data and for LERCs
- ❑ LERCs hold key data that you need to deliver biodiversity net gain
- ❑ Many LPAs already work with LERCs – partnership is key to successful delivery

Contact me ...



Dan Carpenter

dan.carpenter@oxfordshire.gov.uk

01865 815419

www.tverc.org